

Installation & Operating Guide



...connecting to the aftermarket

USB to OEM Car Stereos

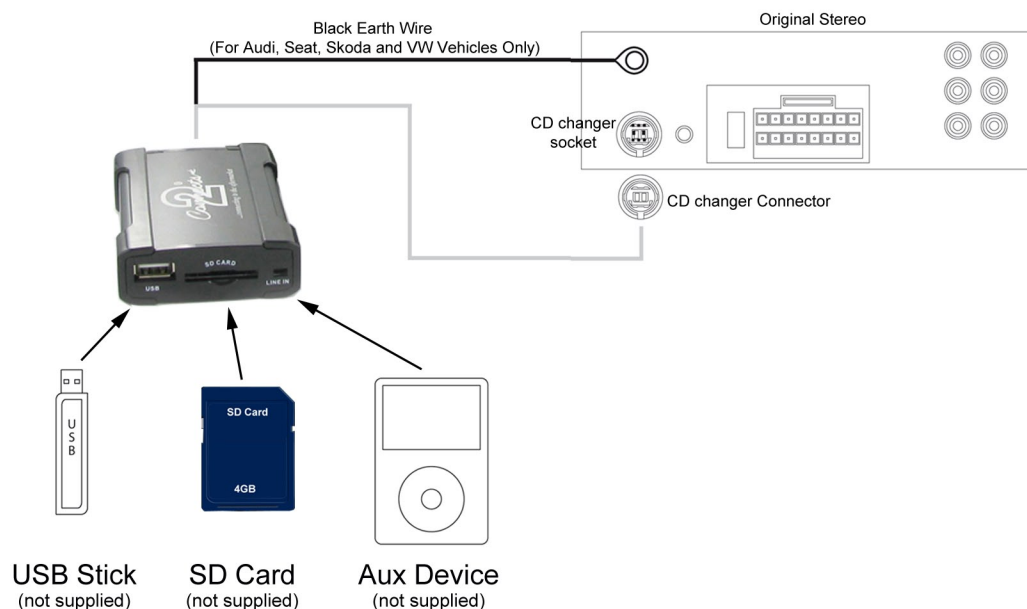
Installation

1. Remove original stereo. You may require specialist removal keys for this.
2. Disconnect power from the stereo.
3. If the vehicle has an OEM CD changer, this will need to be disconnected. For BMW vehicles this needs to be done at the CD changer itself.
4. For Audi, Seat, Skoda and VW vehicles - Connect the flying black earth wire to the chassis of the original stereo. This must be done before commencing step 5 in order to prevent damage to the head unit and/or the USB interface.
5. Connect the CD changer connector of the supplied USB interface to the CD changer socket on the back of the original stereo
6. Mount the USB interface and cable in the desired location. The glovebox or centre console is a popular choice.
7. Refit the original stereo



Operation

1. In order for the USB interface to read the music files on your USB memory stick or SD card, the files must be setup on it as follows:
 - a. The USB/SD card must be formatted as FAT32 and with a maximum capacity of 4GB.
 - b. All files must be in MP3 format
 - c. Six folders must be created on the USB memory stick or SD Card named CD01, CD02, CD03, CD04, CD05 and CD06. A maximum of 99 tracks can be saved into each folder
2. The USB interface is selected on the original stereo by pushing the Source or CD changer button on the stereo. Refer to original stereo manual for more information
3. To select the aux input or SD card simply connect the aux lead or SD card to the interface. The interface will automatically switch over. To go back to USB, disconnect the aux lead or SD card.
4. Whilst the USB stick or SD card is selected, track up/down can be selected from the stereo and steering wheel controls (if fitted). Volume can be adjusted in both aux, USB and SD mode.



Note for CTAPGIPOD010:

When using the CTAPGIPOD010 for Peugeot/Citroen vehicles, please note that the stereo may require CD changer enabling. If an original CD changer is/was fitted then this does not apply. The stereo can be enabled by a main dealer or by purchasing a Connects2 CTVPGX010 interface which enables the stereo.