

CANEMU CAN filter connection manual for Renault

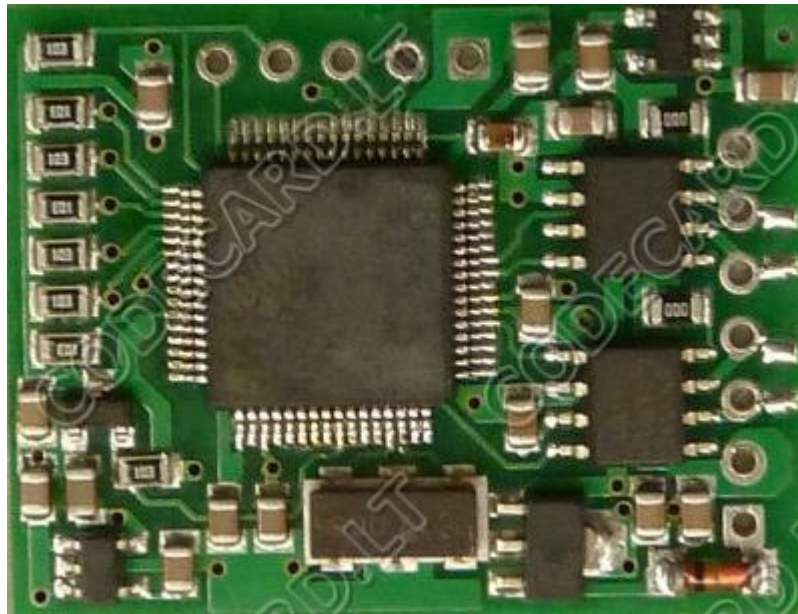
1. CANEMU installation instructions for Renault Laguna III



Remove instrument cluster and change mileage in 24C16 EEPROM.

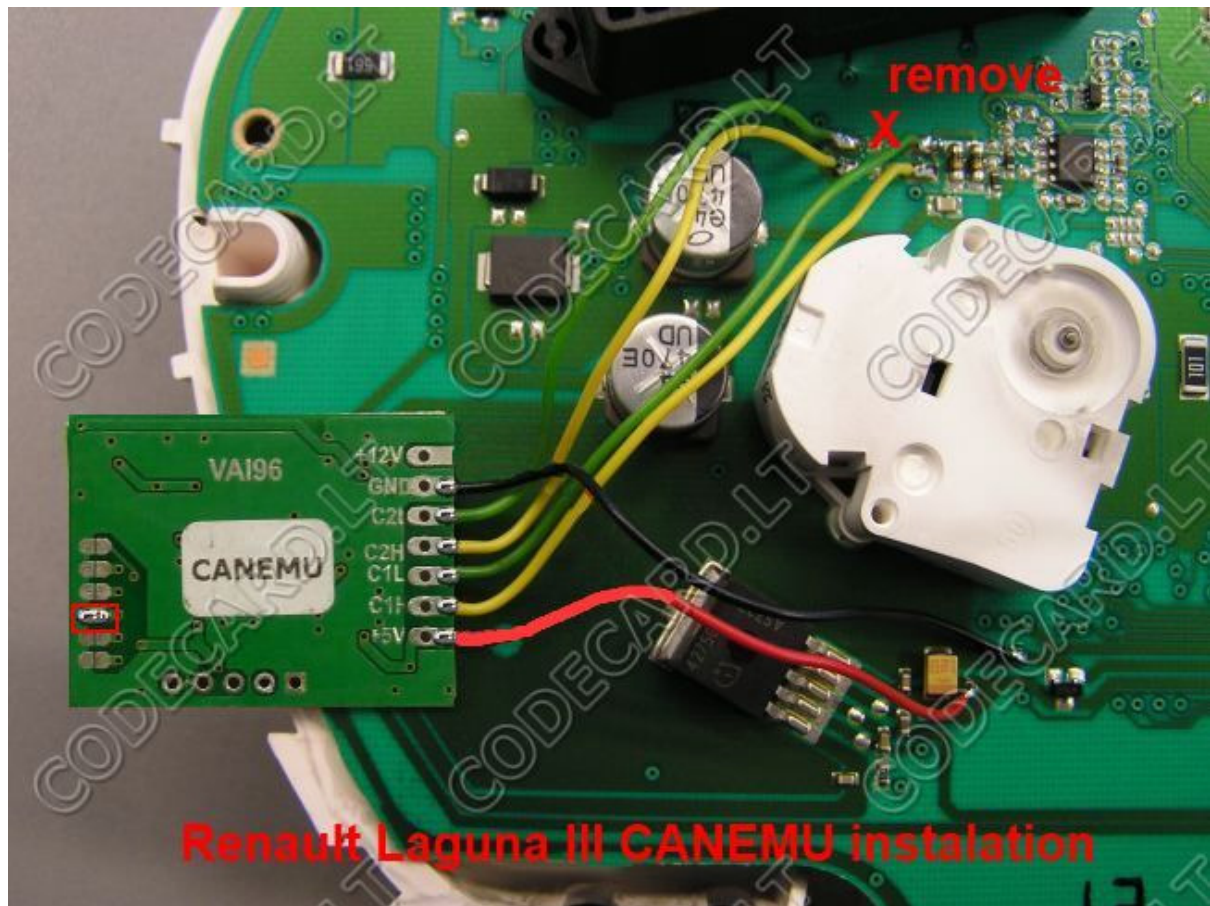
- For first prepare **CANEMU** board: solder 3 configuration point. Use fine KYNAR wire for installation.





Remove 121 resistor !

Install CANEMU board like in picture:



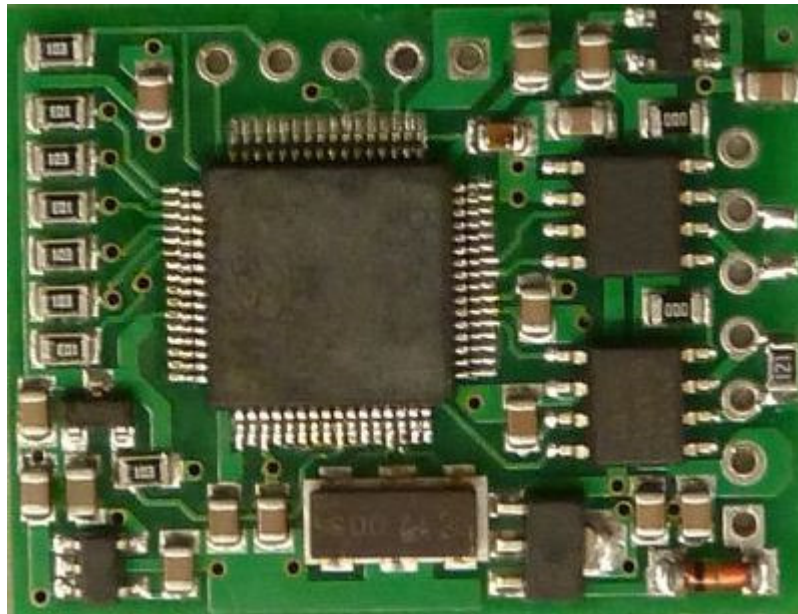
2. CANEMU installation instructions for Renault Megane III



Remove instrument cluster and change mileage in 24C16 EEPROM.

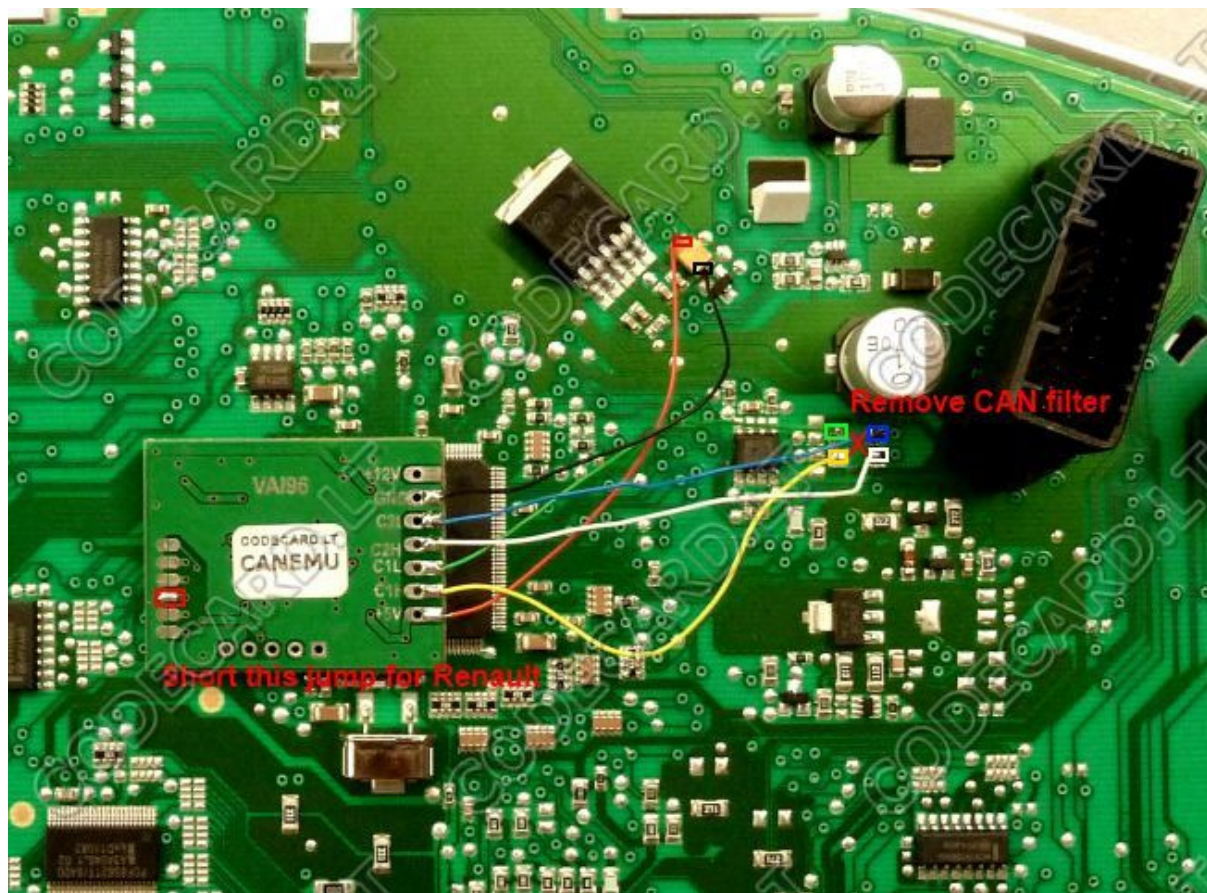
- For first prepare **CANEMU** board: solder 3 configuration point. Use fine KYNAR wire for installation.





Resolder 121 resistor like in picture!

Install CANEMU board like in picture:



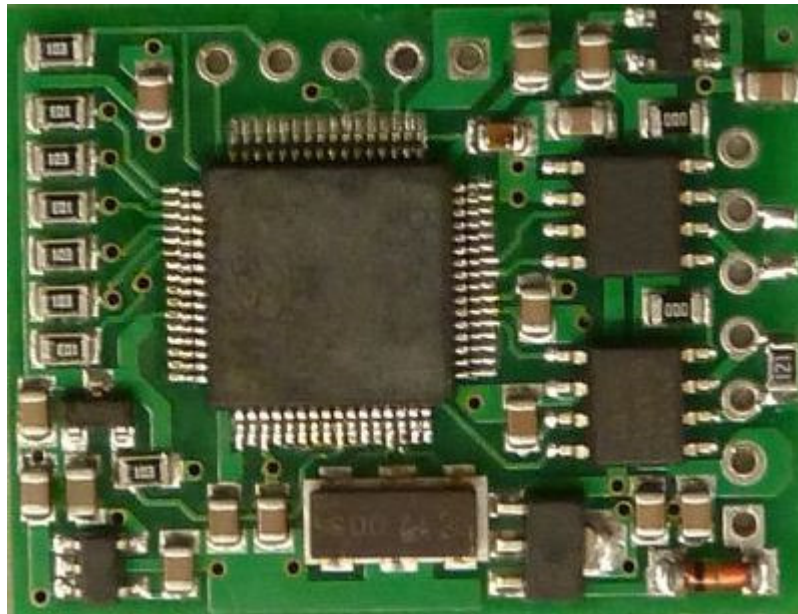
3. CANEMU installation instructions for Renault Scenic III



Remove instrument cluster and change mileage in 24C16 EEPROM.

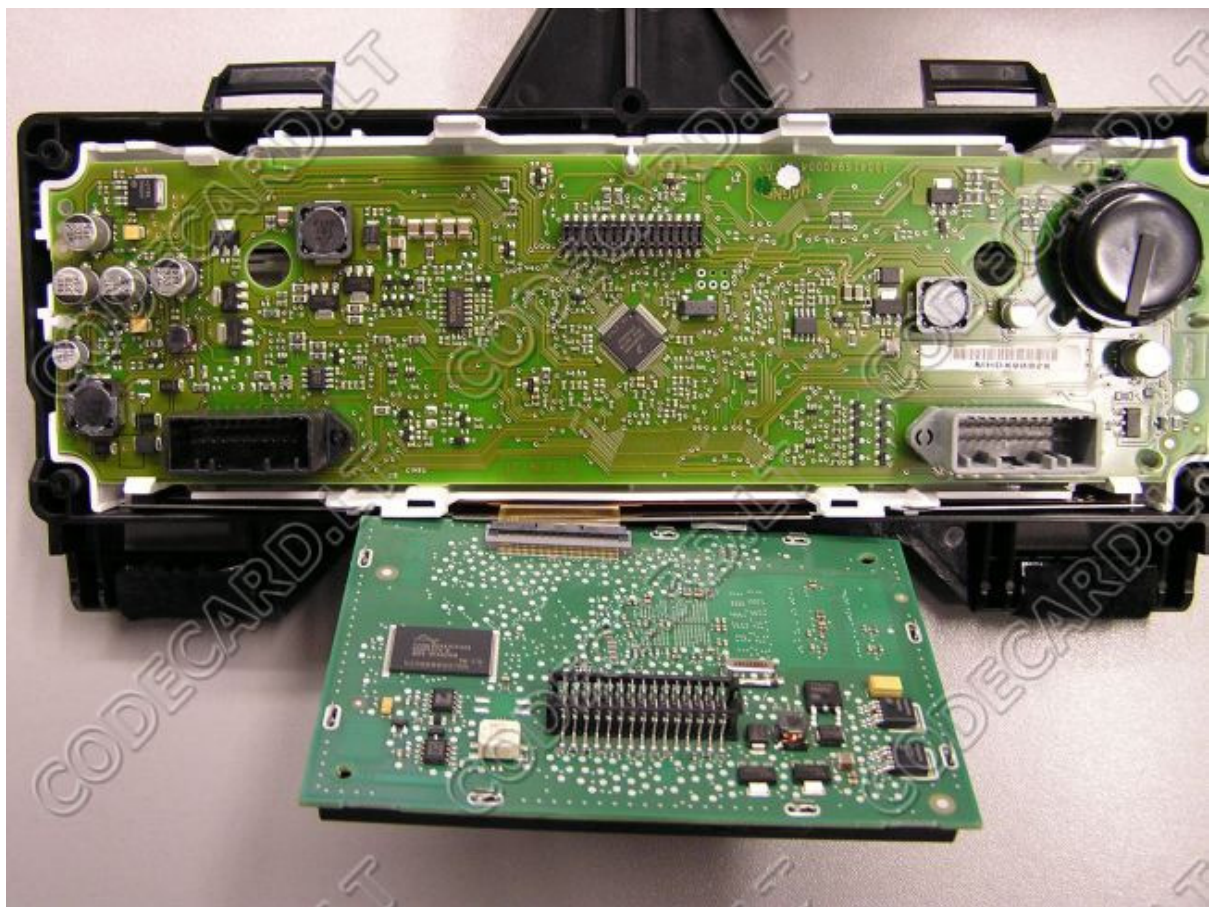
- For first prepare **CANEMU** board: solder 3 configuration point. Use fine KYNAR wire for installation.

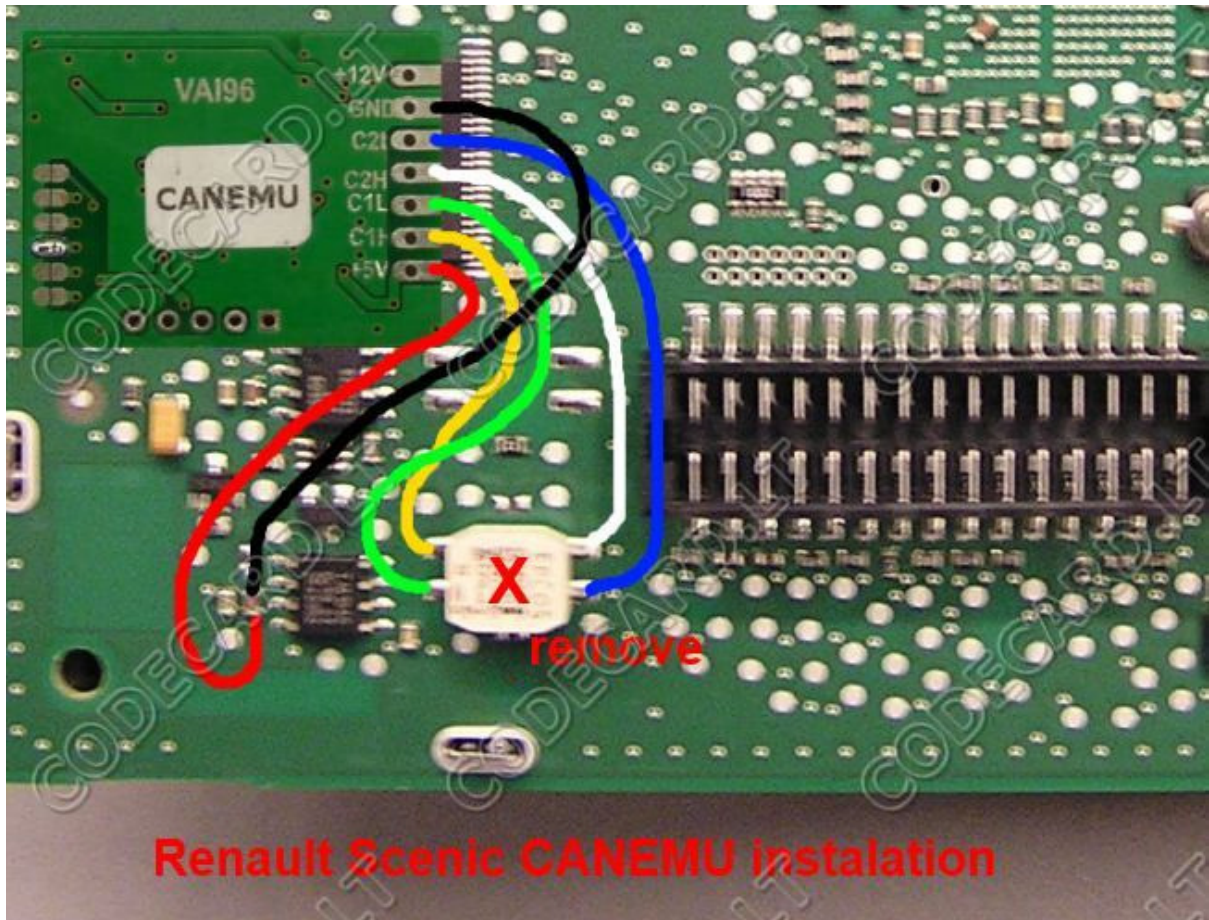




Resolder 121 resistor like in picture!

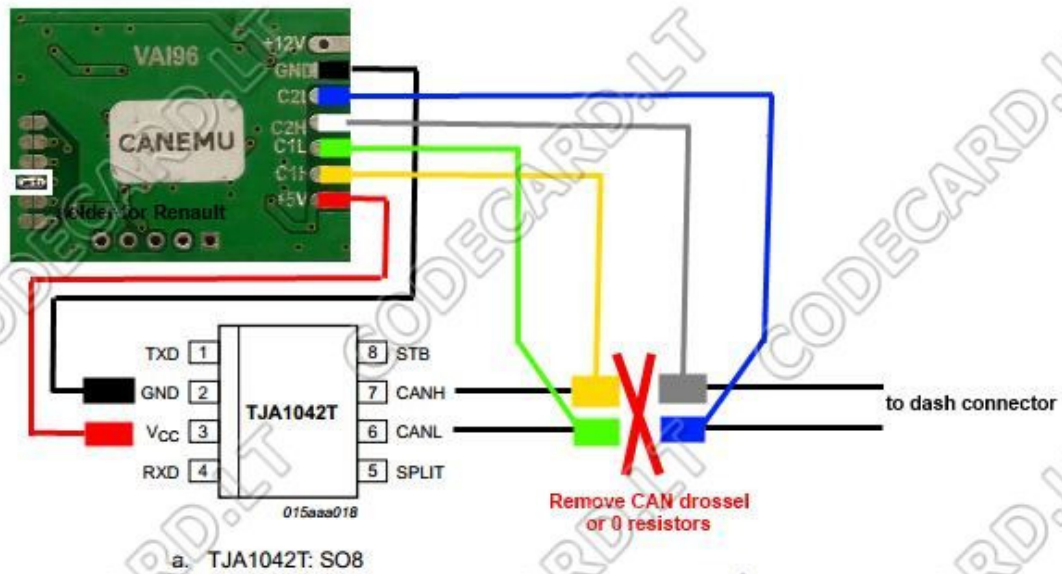
Install CANEMU board like in picture:





**4. CANEMU installation instructions for other Renault and Dacia cars:
 Clio IV, Captur, Lodgy ...**

Open instrument cluster and find CAN circuit (TJA1042 or other TJAxxxx 8 pins IC) . TJAxxxx pin 3 is +5V, pin2 – GND and pin6 – CAN low, pin7 – CAN high.



**CANEMU basic wiring
 for Renault and Dacia cars**