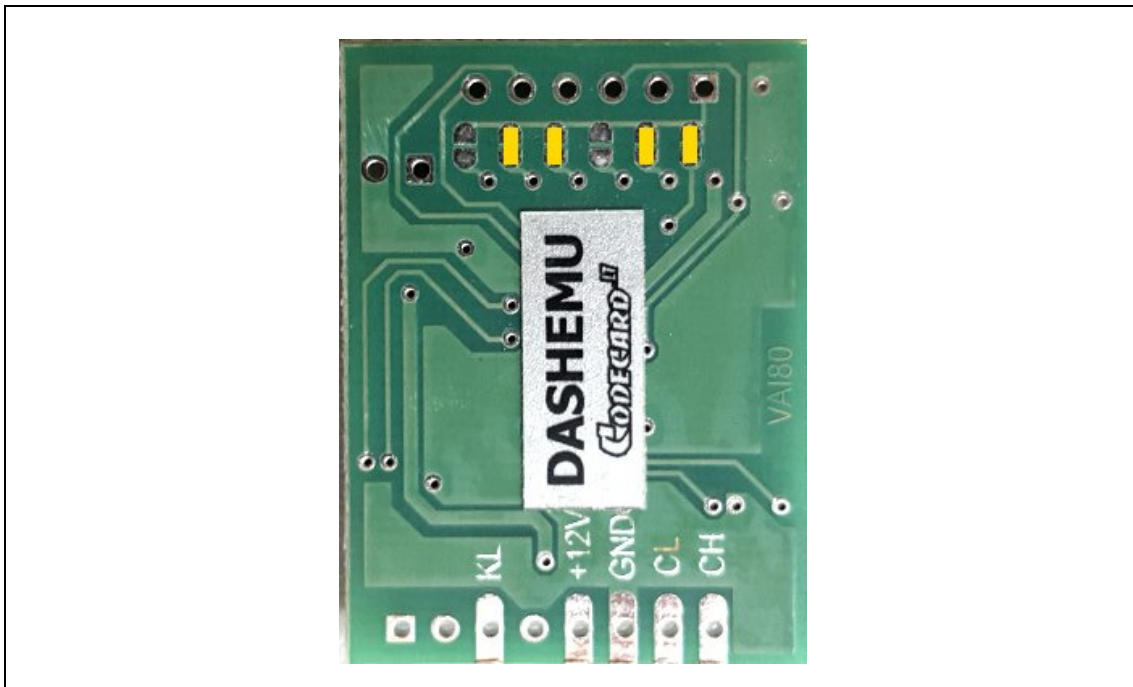


## DASHEMU user manual

**1. Mercedes Benz W221 instrument cluster CAN bus simulator. DASHEMU send CAN Ignition (IGN), ACC and others signals to test cluster on bench.**

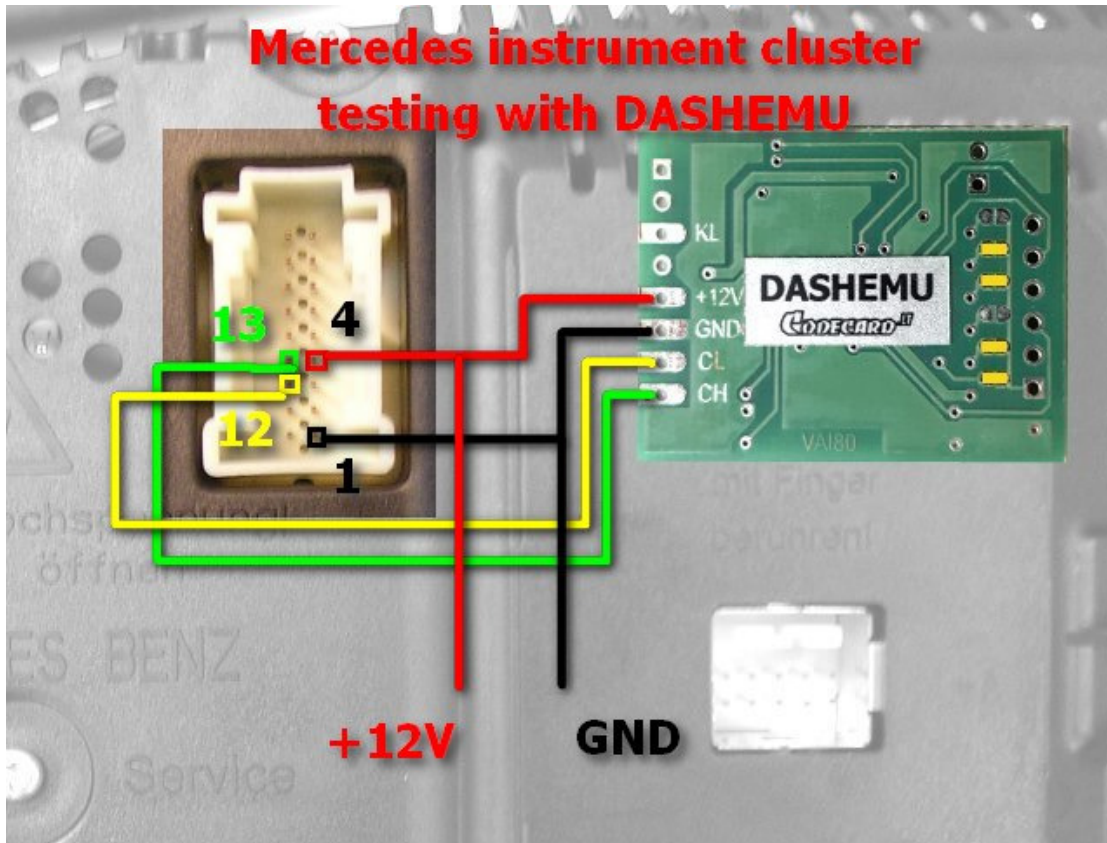
Can be used to repair Mercedes Benz S-class (CL550 CL63 CL65 S550 S63 S65 W216 W221) instrument cluster.

You must configure DASHEMU like in picture (solder links marked with yellow on photo):



**Mercedes W221 instrument cluster and DASHEMU wiring:**

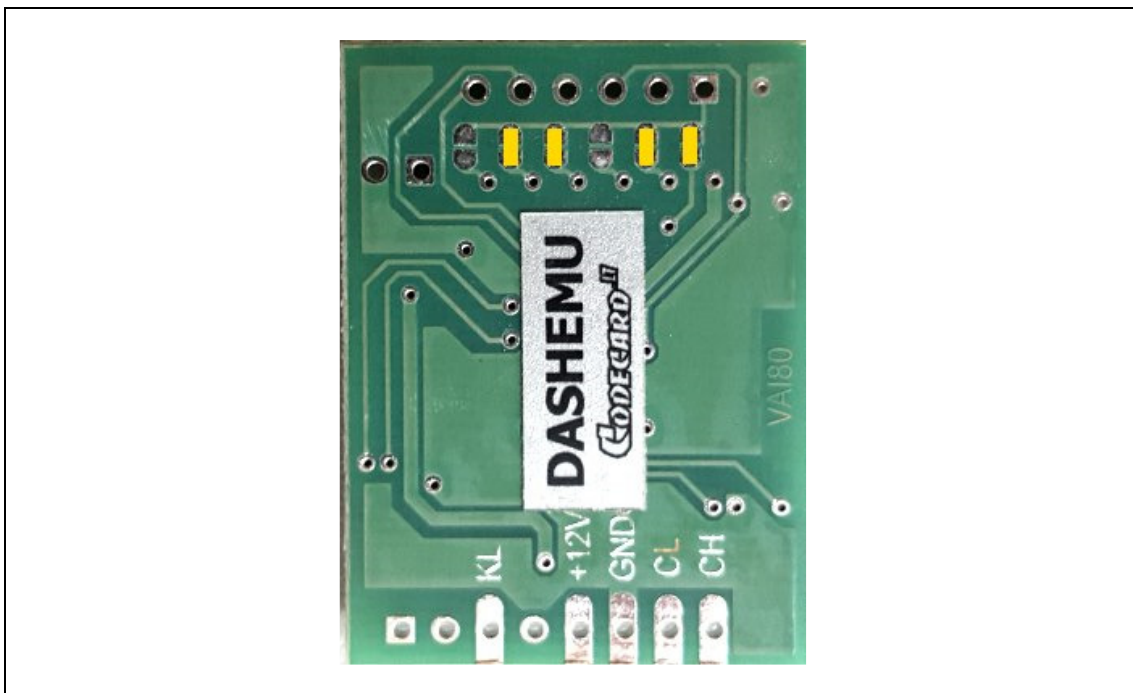
- 4 - +12V
- 1 - GND
- 13 - CH
- 12 - CL



**2. Mercedes Benz W212, W204, W166, W117 instrument cluster CAN bus simulator. DASHEMU send CAN Ignition (IGN), ACC and others signals to test cluster on bench.**

Can be used to repair Mercedes Benz (2011-2015 models) instrument cluster.

You must configure DASHEMU like in picture (solder links marked with yellow on photo):



**Mercedes instrument cluster and DASHEMU wiring:**

- 4 - +12V
- 1 - GND
- 13 - CH
- 12 - CL



**3. BMW F-series (F01, F10, F25, F30 and others including Full LED) instrument cluster CAN bus simulator. DASHEMU send CAN Ignition (IGN), ACC and others signals to test cluster on bench.**

Can be used to repair BMW (2009-2016 models) instrument cluster.

You must configure DASHEMU like in picture (solder links marked with yellow on photo):



**BMW Fxx instrument cluster and DASHEMU wiring:**

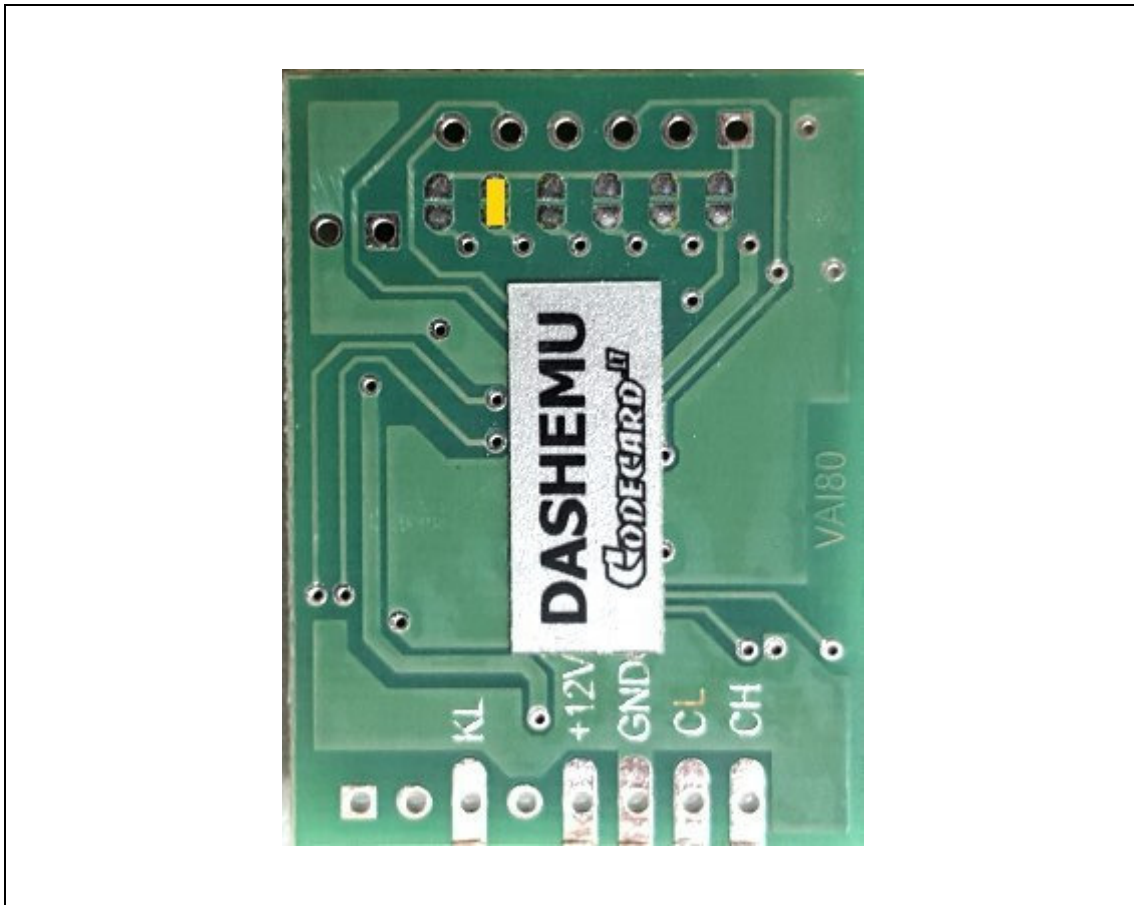
- 1, 2 pins - +12V
- 7, 8 pins - GND
- 6 - CH
- 12 - CL
- 11 - +12V (dashboard Wakeup signal)



**4. Ford Mondeo, Fusion 2013+(also works with Full LCD dash) instrument cluster CAN bus simulator. DASHEMU send CAN Ignition (IGN), ACC and others signals to test cluster on bench.**

Can be used to repair Ford (2013-2016 models) instrument cluster.

You must configure DASHEMU like in picture (solder links marked with yellow on photo):

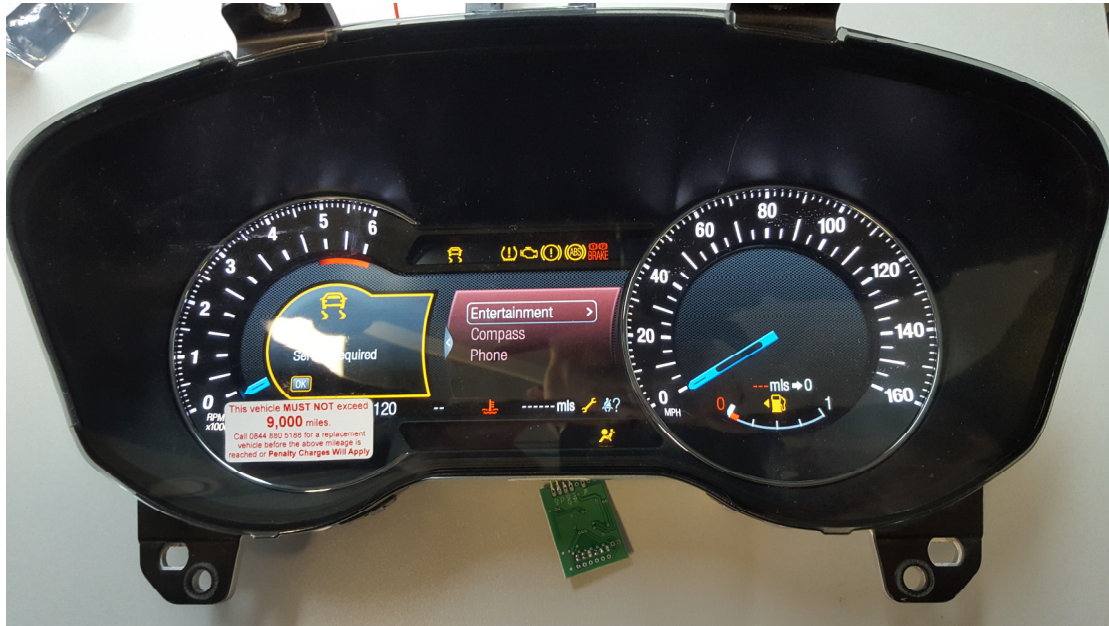


**Ford Fusion, Mondeo 2013+ instrument cluster and DASHEMU wiring:**

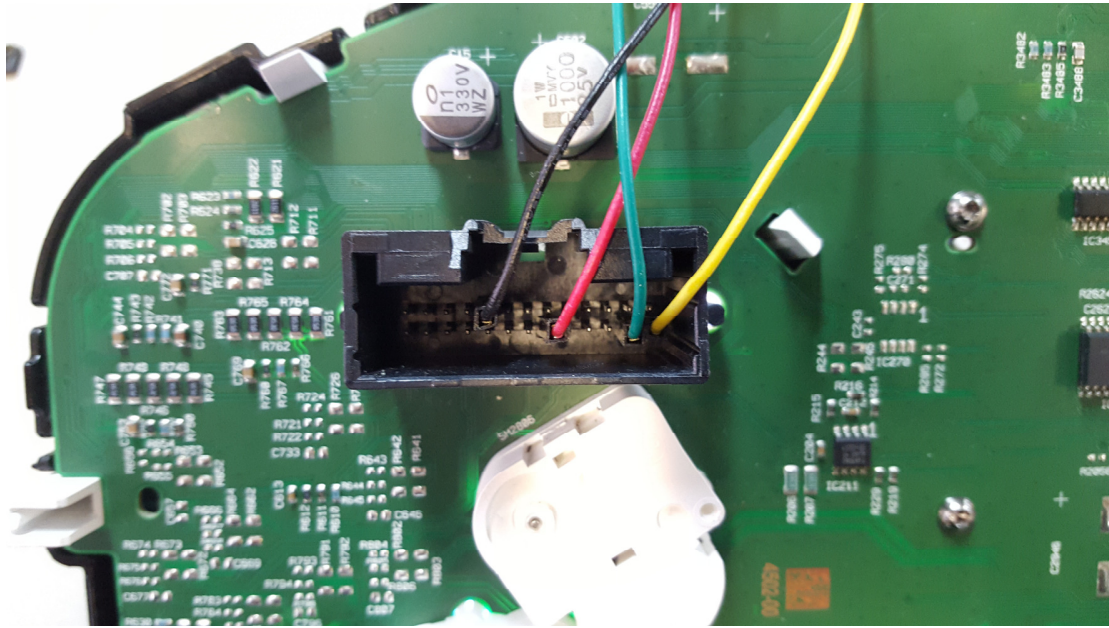
**26 pins black connector**

- 21 - +12V
- 5 - GND
- 26 - CH
- 25 - CL

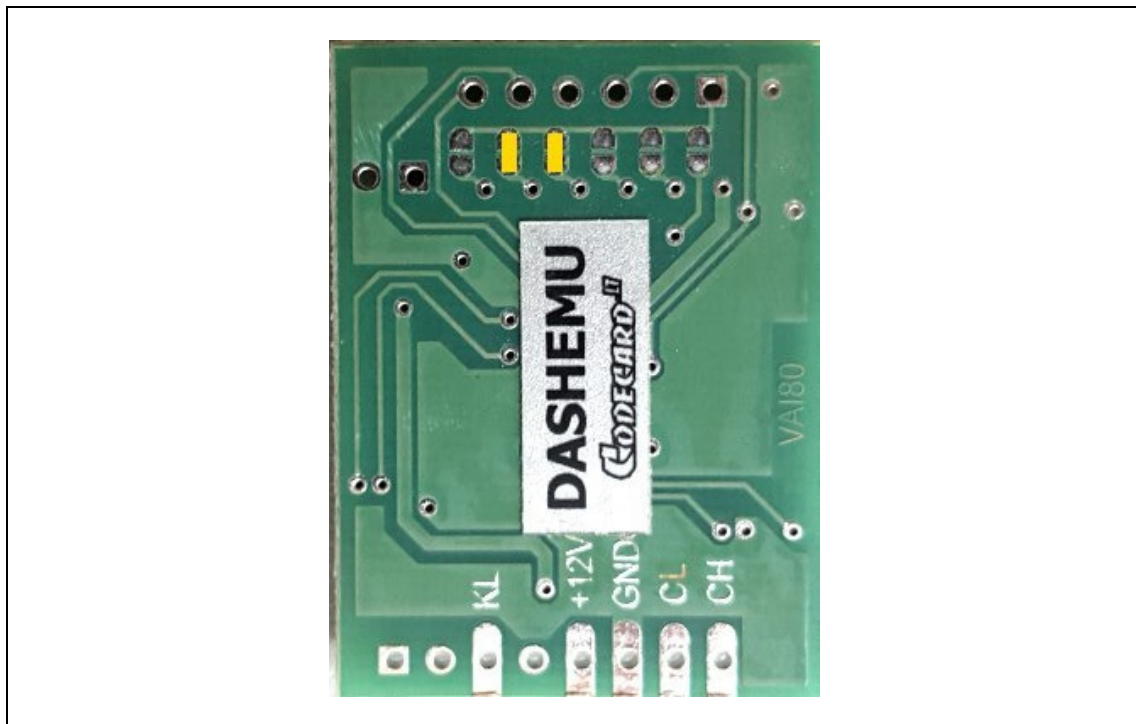
# CARPROG



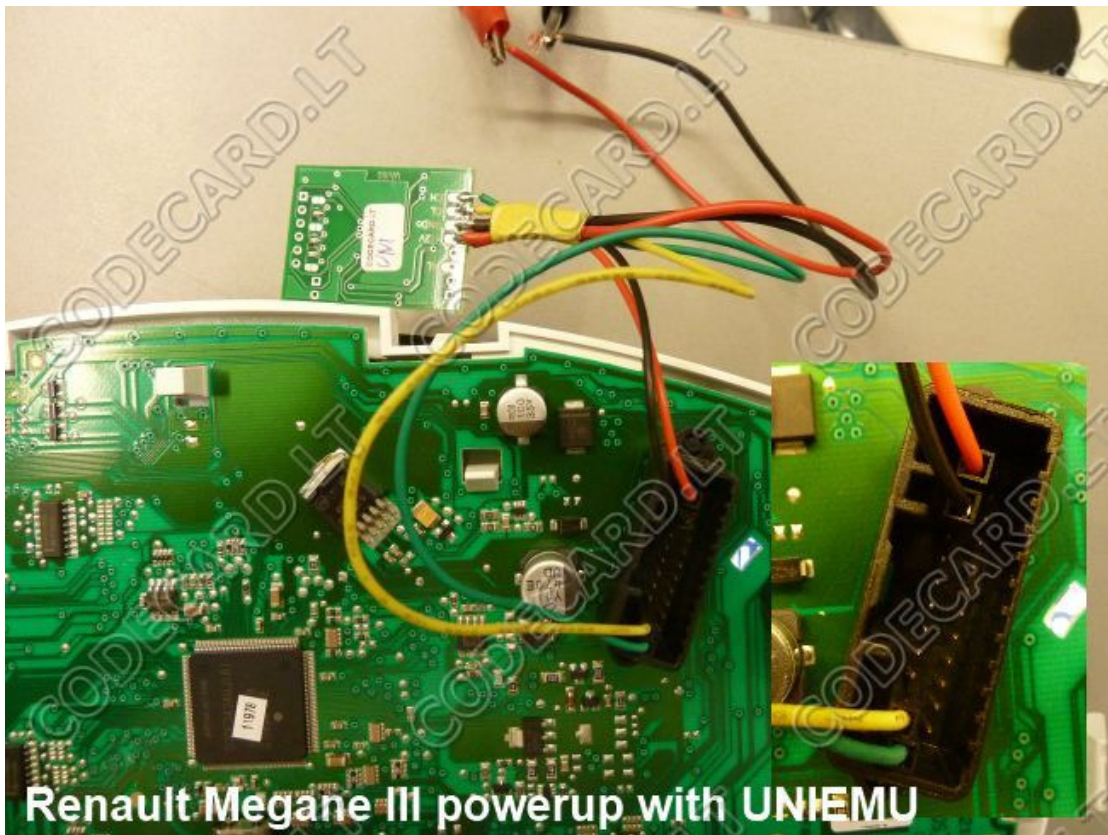




**5. Renault CAN bus emulator for instrument cluster repair**

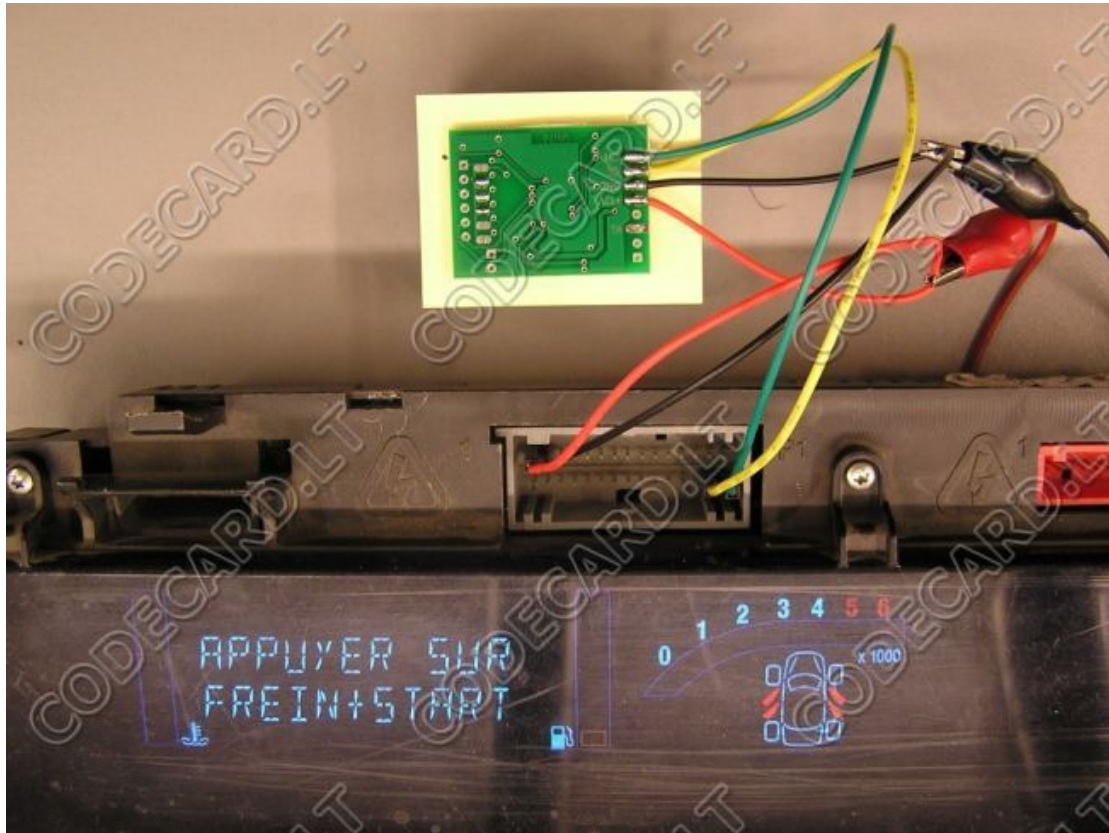


Renault Dacia 2011+ (Megane III, Clio IV, Dacia Duster, Lodgy, and others) wiring:



Dashboard 12 pin - CH  
Dashboard 11 pin - CL  
Dashboard 2 pin - +12V

Dashboard 3 pin - GND



**Renault Scenic II wiring:**

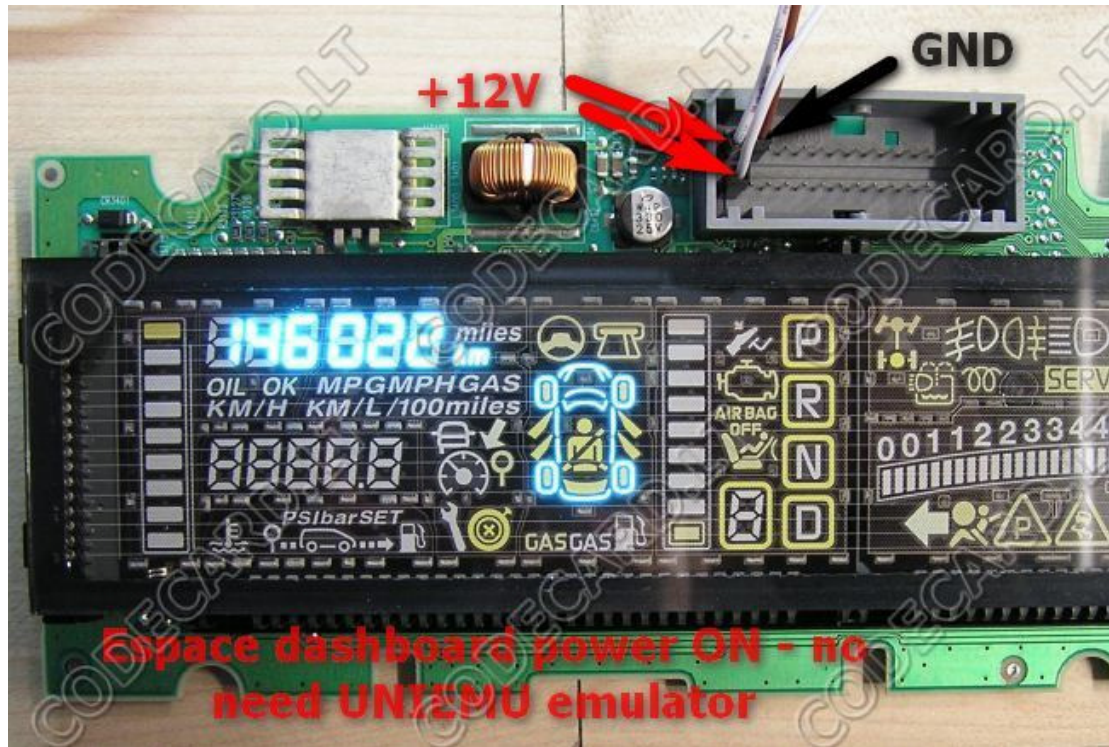
- 1 - +12V
- 2 - GND
- 30 - CH
- 29 - CL

# CARPROG



## Renault Megane wiring:

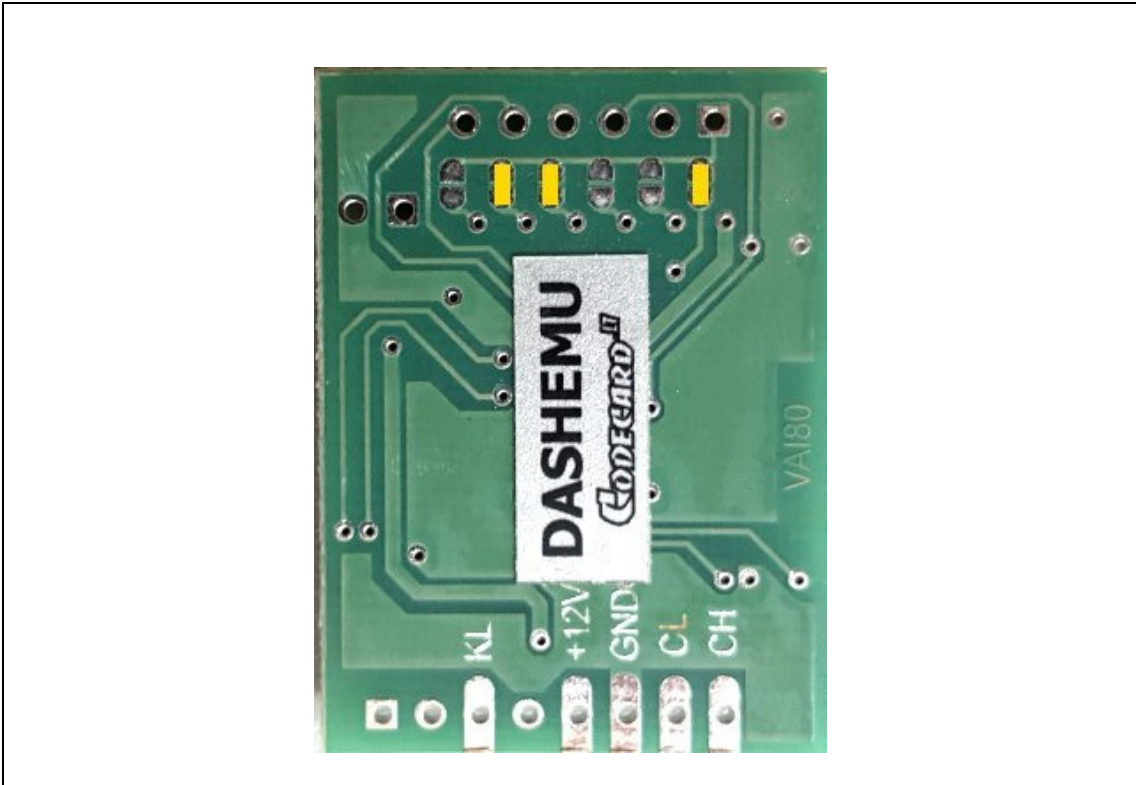
- 1 - CH
- 4 - CL
- 15 - +12V
- 30 - GND



## Renault Espace wiring:

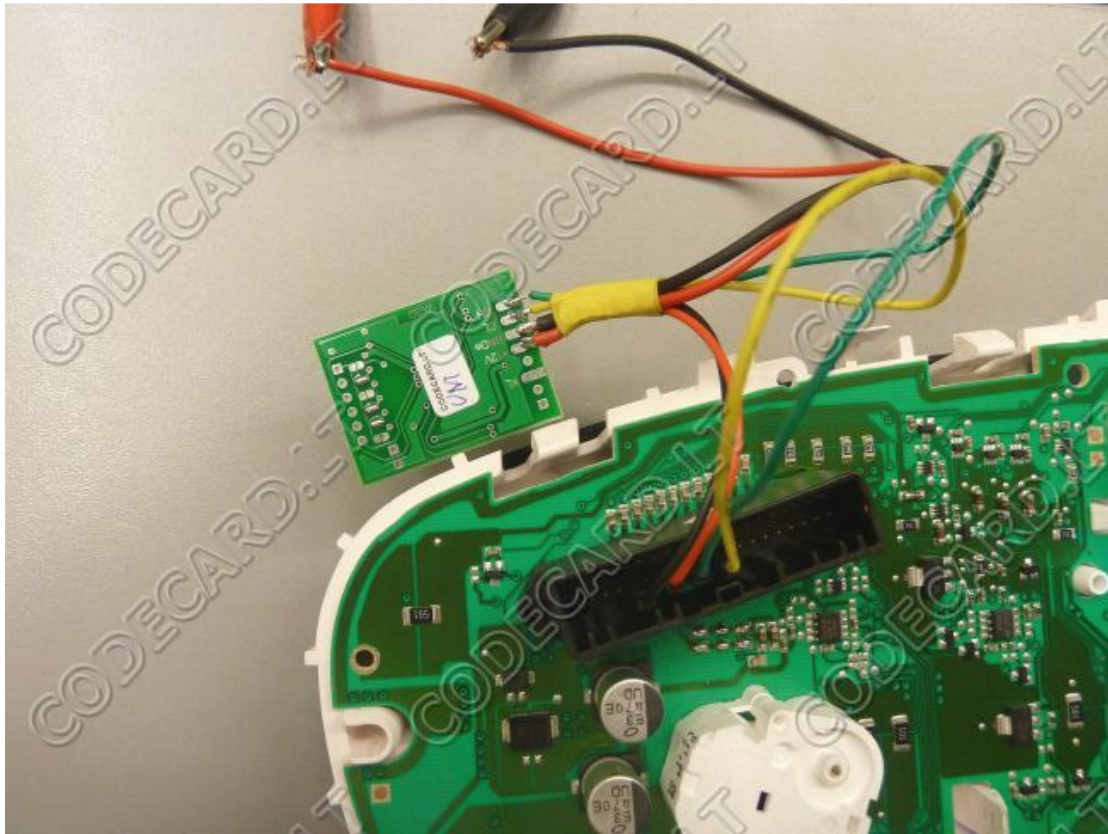
- 1, 16 - +12V
- 2 - GND

## 6. Laguna III instrument cluster CAN bus emulator for dash testing on the table.



Renault Laguna III wiring:

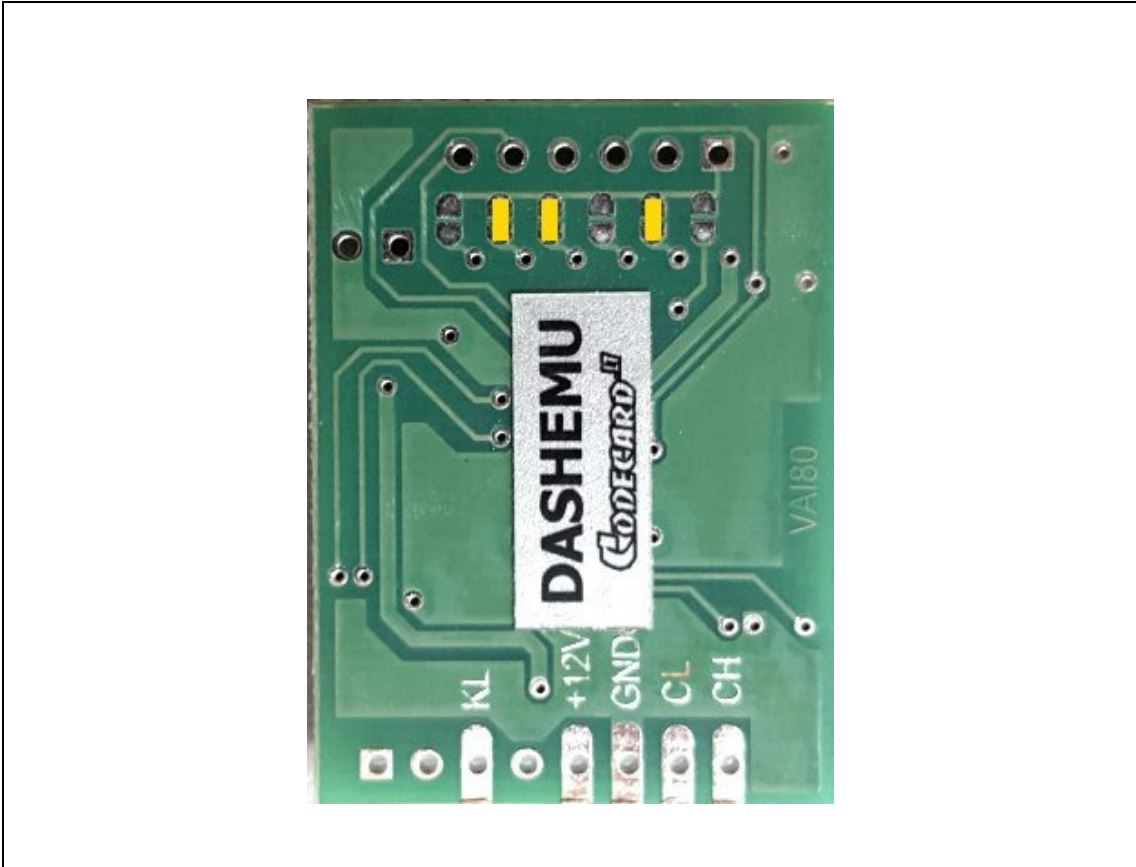




Dashboard 9 pin - CH  
Dashboard 11 pin - CL  
Dashboard 7 pin - +12V  
Dashboard 5 pin - GND



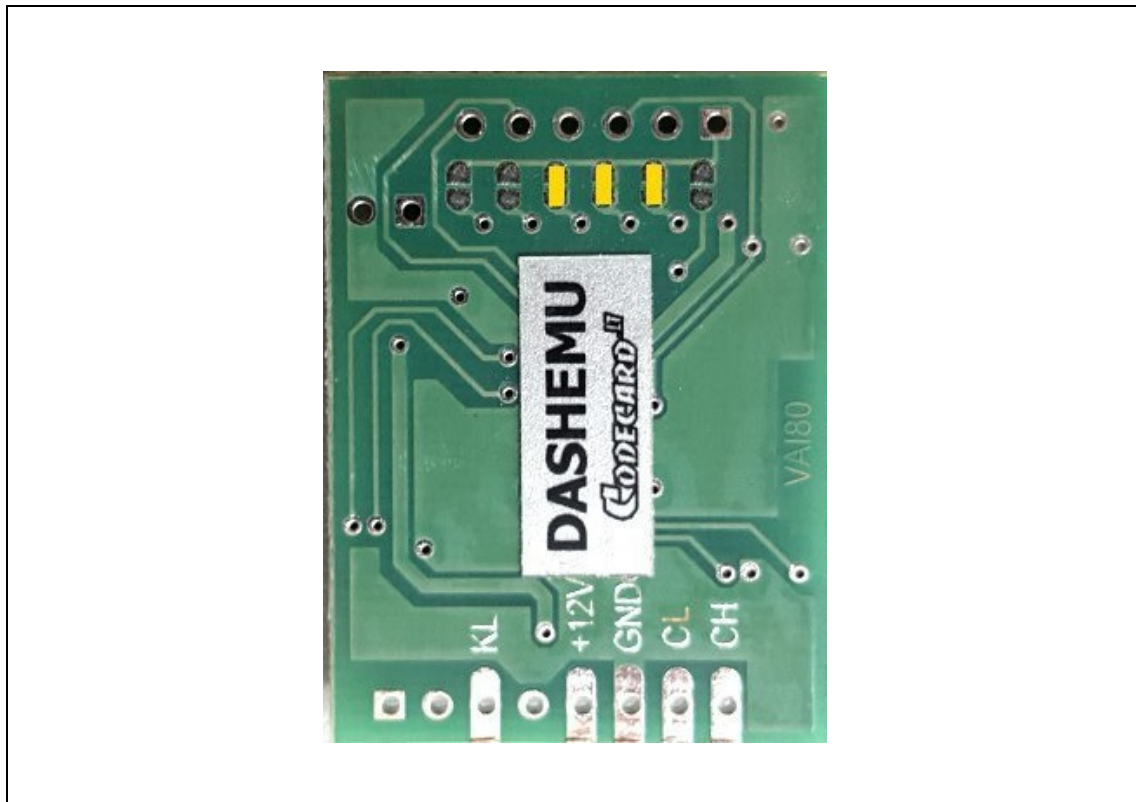
- 7. Audi A4, A5, A6, A7, A8, Q5, Q7 dash (including Full LED instrument cluster) test on-table** – tested and works with all Audi 2005-2012 – for repair purposes. With emulator dashboard works like in car with ignition ON



Audi dash with grey connector emulator connection pinout:

- GND – to cluster green connector pin 30
- +12V – to cluster green connector pin 32
- CH – to cluster green connector pin 4
- CL – to cluster green connector pin 3

- 8. Volkswagen, Audi, Skoda, Seat MQB platform dash (including color LCD) test on-table** – tested and works with all MQB clusters – for repair purposes. With emulator dashboard works like in car with ignition ON





Audi dash with grey connector emulator connection pinout:

GND – to cluster green connector pin 10

+12V – to cluster green connector pin 1

CH – to cluster green connector pin 18

CL – to cluster green connector pin 17